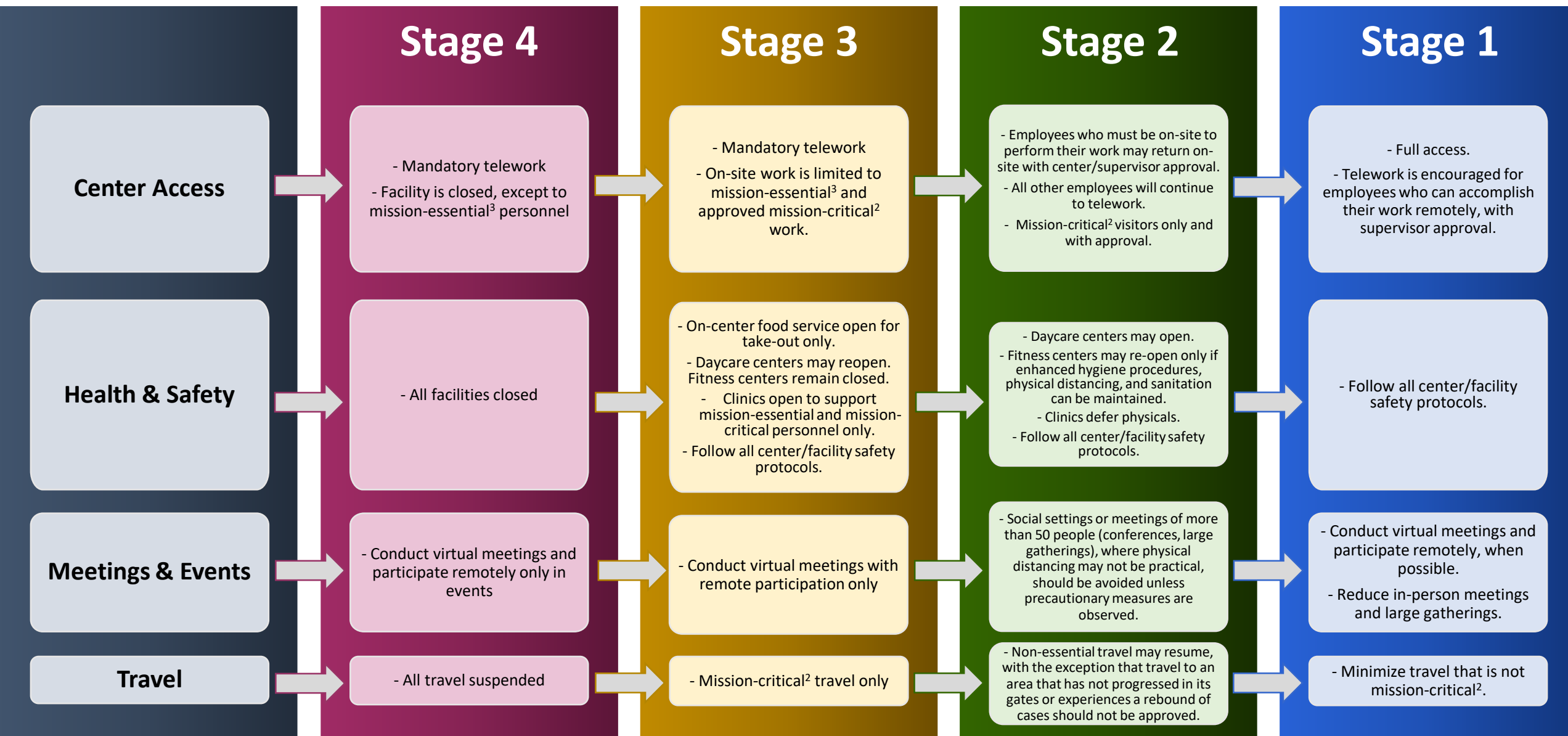


NASA Framework for Return to On-Site Work (as of 26 March 2021)

* This guidance applies to NASA civil servants. Contractor employees should reach out to their management.



1. All travel to or from centers at Stage 3 or higher, or to countries at Level 3 or higher, requires an approved Request for Travel Exception form. The [Request for Travel Exception](#) form is available on the NASA People website. For the latest CDC international travel information, go to <https://www.cdc.gov/coronavirus/2019-ncov/travelers/index.html>.

2. Mission critical: work (on NASA activities or those supporting our federal agency partners) that needs to be performed to minimize the impact on mission/project operations and/or schedules and cannot be performed remotely/virtually.

3. Mission essential functions: As described in the COOP, during an emergency, NASA's Primary and Mission Essential Functions (P/MEFs) must be continued with minimum interruption and are focused on protecting life and property as well as insuring agency leadership and control of the agency.